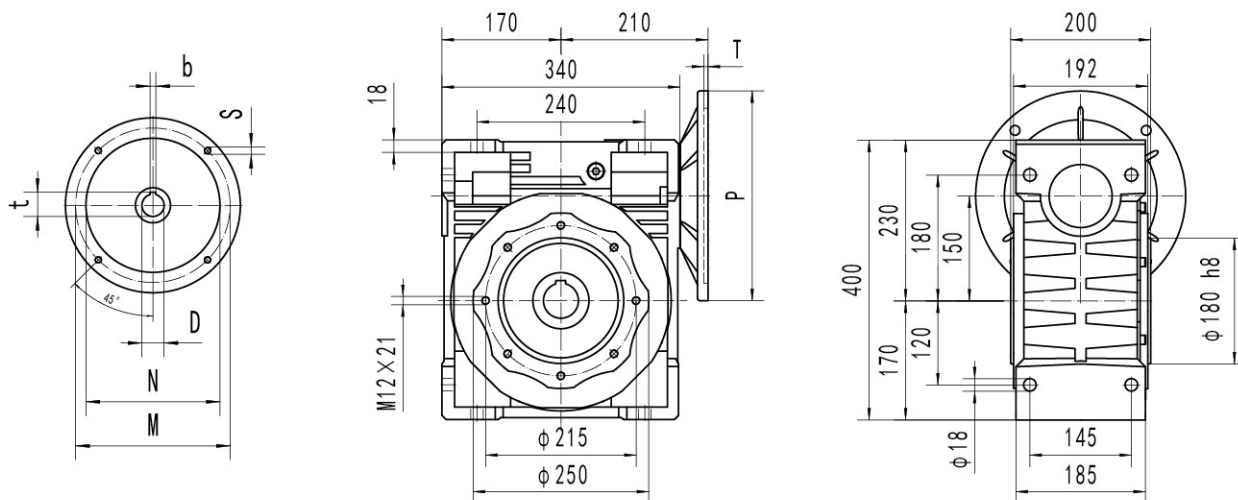
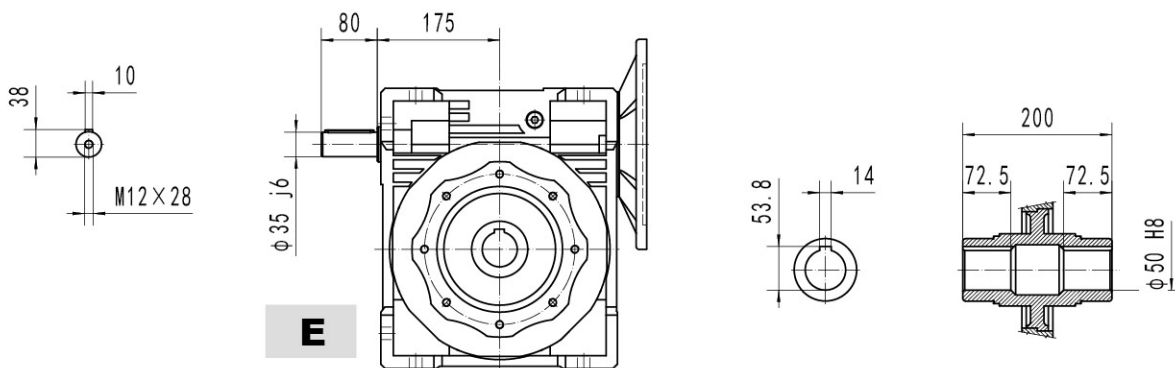


# SMRV150..(IEC)

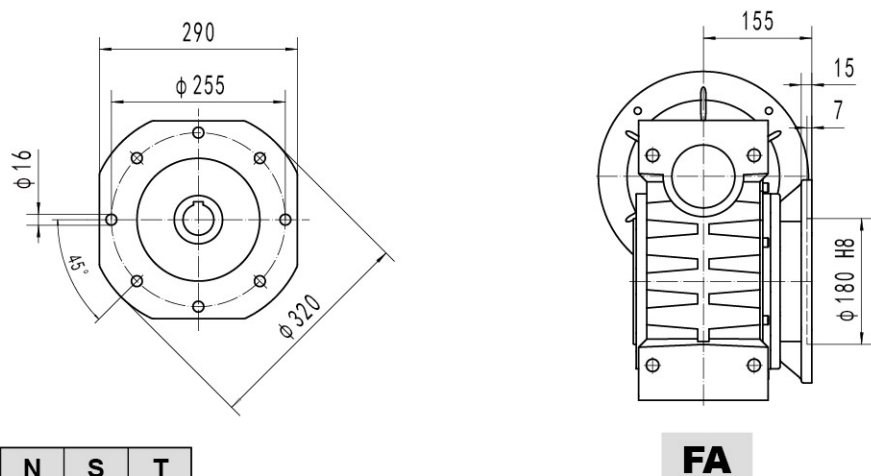
## 输入接口 / Input adapters



## 蜗杆输出轴 / Worm output shaft



## 输出法兰 / Outputflange



| IEC    | $D_{ES}$ | $b$ | $t$  | $P$ | $M$ | $N$ | $S$ | $T$ |
|--------|----------|-----|------|-----|-----|-----|-----|-----|
| 160B5  | 42       | 12  | 45.3 | 350 | 300 | 250 | 19  | 7   |
| 100B5  | 28       | 8   | 31.3 | 250 | 215 | 180 | M12 | 6   |
| 112B5  | 28       | 8   | 31.3 | 250 | 215 | 180 | M12 | 6   |
| 132B5  | 38       | 10  | 41.3 | 300 | 265 | 230 | M12 | 6   |
| 132B14 | 38       | 10  | 41.3 | 200 | 165 | 130 | 11  | 5   |

重量 (不包括马达)  $\approx 93$  kg  
Weight without motor  $\approx 93$  kg